

# 'Chelsea Open Day'

at Millenium Hotel London Mayfair

Wednesday 18th April 2012

Ballroom suite



## Information for exhibitors and delegates

### Hotel location

44 Grosvenor Square  
London  
W1K 2HP

### Hotel contact details

**t:** +44 (0)20 7596 3122  
**f:** +44 (0)20 7596 3165  
**e:** ashleigh-nicole.sharp@millenniumhotels.co.uk  
**w:** www.millenniumhotels.co.uk/mayfair

### Parking

There is an NCP car park at the hotel. Booking is advised.

### Nearest Tube

Bond Street or Green Park

### FTD – Event contact telephone

**John Booth:** 07771 916786  
**George Moss:** 07771 916795  
**Trish Brockbank:** 07952 800001

### The Day's Events

This is an open event and you are welcome to attend one or more of the talks – or simply network and visit the exhibitor stands. It is entirely your choice on the day.

---

**11.30 Introduction by FTD**

---

**11.40 Neil McDonald**  
Assistant Manager West Ham United  
'Stand still or move on'

---

**12.00 Dr Ralph Rogers**  
The London Sports Injury Clinic 108 Harley Street  
'Why would you leave your greatest asset exposed?'

---

**12.30 Paul Biffen**  
MD Oracle Venue Management Systems  
'Fan engagement and profit development using QR codes'

---

**13.00 Steve Jelfs**  
International Clinical Marketing  
Manager Cardiac Science  
'Making your club a heart safe environment'

---

**13.30 John Gaffney**  
Director, Sports & Leisure  
ARCADIS UK  
'Releasing development value from your stadium'

---

**14.00 Lunch and networking**

---

**15.15 Closing remarks**  
(approx)

---

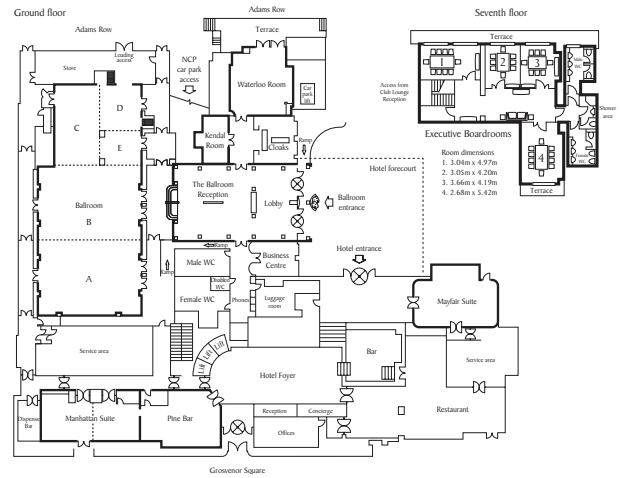
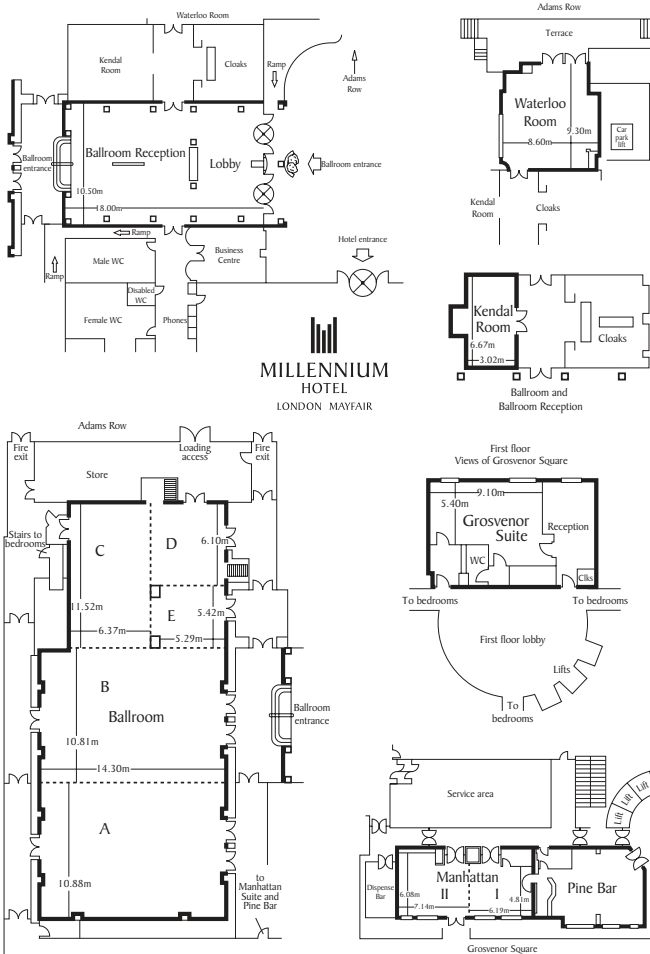
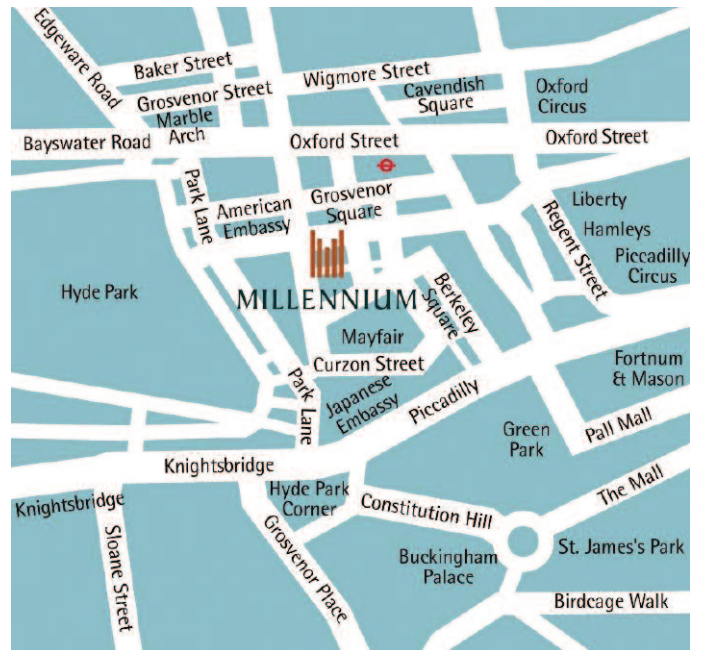


## The Millenium Hotel

The Millennium Hotel London Mayfair is located in the prestigious and desirable London district of Mayfair and has established itself not only as one of the finest Mayfair hotels but also as one of the most luxurious hotels in London.

The property, which was a magnificent 18th century mansion, has maintained the charm, elegance and Georgian façade of the stately townhouse and combines this with style, luxury and comfort.

The deluxe four star Millennium Hotel London Mayfair, commonly known as the Millennium Mayfair, is situated in an ideal location, close to many of London's most fashionable shops.



FLOOR PLANS

### ENTIRE BALLROOM DIMENSIONS & CAPACITY CHART

| Dimensions in metres                              | ENTIRE BALLROOM |               | A             |                 | B            |             | C               |             | D           |             | E          |            |
|---|-----------------|---------------|---------------|-----------------|--------------|-------------|-----------------|-------------|-------------|-------------|------------|------------|
| Area  | 33.85 x 14.30   | 22.31 x 14.30 | 10.88 x 14.30 | 10.81 x 14.30   | 11.52 x 6.17 | 6.10 x 3.29 | 5.42 x 3.29     |             |             |             |            |            |
| Ceiling height to beams                           | 3.75            | 3.75          | 3.75          | 3.75            | 3.30         | 3.30        | 3.30            |             |             |             |            |            |
| Ceiling height to chandeliers                     | 3.81            | 3.81          | 3.81          | 3.81            |              |             |                 |             |             |             |            |            |
| <b>CAPACITIES FOR EVENTS</b>                      |                 |               |               |                 |              |             |                 |             |             |             |            |            |
| Banquet (10 tables)                               | 460             | 330           | 180           | 180             | 70           | 30          | 30              |             |             |             |            |            |
| Banquet (18 tables) B/P                           | 370             | 240           |               |                 |              |             |                 |             |             |             |            |            |
| Banquet (18 tables)                               | 460             | 360           | 144           | 168             | 72           | 24          | 24              |             |             |             |            |            |
| Banquet (18 tables) B/P                           | 348             | 230           |               |                 |              |             |                 |             |             |             |            |            |
| Dinner Dance (18 tables)                          | 360             | 230           | n/a           | n/a             | n/a          | n/a         | n/a             |             |             |             |            |            |
| Dinner Dance (18 tables) B/P                      | 360             | 170           | n/a           | n/a             | n/a          | n/a         | n/a             |             |             |             |            |            |
| Cocktail Reception                                | 700             | 450           | 150           | 150             | n/a          | n/a         | n/a             |             |             |             |            |            |
| Cocktail Reception B/P                            | 700             | 230           | 120           | 120             | n/a          | n/a         | n/a             |             |             |             |            |            |
| <b>CAPACITIES FOR MEETINGS</b>                    |                 |               |               |                 |              |             |                 |             |             |             |            |            |
| Theatre F/P                                       | 500             | 400           | 120           | 120             | 60           | 30          | 30              |             |             |             |            |            |
| Theatre B/P                                       | 430             | 330           |               |                 |              |             |                 |             |             |             |            |            |
| Classroom F/P                                     | 230             | 180           | 72            | 72              | 30           | 15          | 15              |             |             |             |            |            |
| Classroom B/P                                     | 230             | 170           |               |                 |              |             |                 |             |             |             |            |            |
| Cabaret F/P                                       | 280             | 175           | 84            | 84              | n/a          | n/a         | n/a             |             |             |             |            |            |
| Cabaret B/P                                       | 242             | 144           |               |                 |              |             |                 |             |             |             |            |            |
| U-shape   | n/a             | n/a           | 40            | 40              | 30           | 16          | 16              |             |             |             |            |            |
| Boardroom   | n/a             | n/a           | 40            | 40              | 30           | 18          | 18              |             |             |             |            |            |
| NB: B/P - Back Projection; F/P - Front Projection |                 |               |               |                 |              |             |                 |             |             |             |            |            |
| <b>Dimensions in metres</b>                       |                 |               |               |                 |              |             |                 |             |             |             |            |            |
|   | Waterloo        | Kendal        | Mayfair Suite | Manhattan Suite | Manhattan    | Manhattan   | Grosvenor Suite | 1           | 2           | 3           | 4          | Boardrooms |
| Dimensions  | 8.60 x 9.30     | 6.67 x 3.02   | 12.72 x 7.08  | 13.40 x 4.81    | 6.19 x 4.81  | 7.14 x 6.08 | 9.10 x 3.40     | 4.97 x 3.04 | 4.20 x 3.05 | 4.19 x 3.65 | 4.2 x 2.68 |            |
| Ceiling Height                                    | 2.30            | 2.30          | 3.28          | 3.31            | 3.31         | 3.31        | 2.88            | 2.98        | 2.98        | 2.98        |            |            |
| <b>CAPACITIES FOR EVENTS</b>                      |                 |               |               |                 |              |             |                 |             |             |             |            |            |
| Banquet (18 tables)                               | 60              | n/a           | 60            | 60              | 30           | 30          | 18              |             |             |             |            |            |
| Banquet (18 tables) B/P                           | 72              | n/a           | 60            | 72              | 36           | 36          | n/a             |             |             |             |            |            |
| Dinner Dance (18 tables)                          | 60              | n/a           | 32            | 60              | 60           | 60          | n/a             |             |             |             |            |            |
| Cocktail Reception                                | 80              | 25            | 70            | 60              | 50           | 50          | 18              |             |             |             |            |            |
| <b>CAPACITIES FOR MEETINGS</b>                    |                 |               |               |                 |              |             |                 |             |             |             |            |            |
| Theatre   | 72              | n/a           |               | 80              | 32           | 32          | n/a             |             |             |             |            |            |
| Classroom   | 18              | n/a           |               | 18              | 24           | 24          | n/a             |             |             |             |            |            |
| Cabaret   | 15              | n/a           |               | n/a             | n/a          | n/a         | n/a             |             |             |             |            |            |
| U-shape   | 27              | n/a           | 24            | 32              | 14           | 14          | n/a             |             |             |             |            |            |
| Boardroom   | 26              | 10            | 26            | 36              | 18           | 18          | 18              | 10          | 8           | 8           | 10         |            |

PLANS NOT SHOWN TO SCALE. PLEASE REFER TO DIMENSIONS AND CAPACITY CHART